

Williams Landing Master Plan

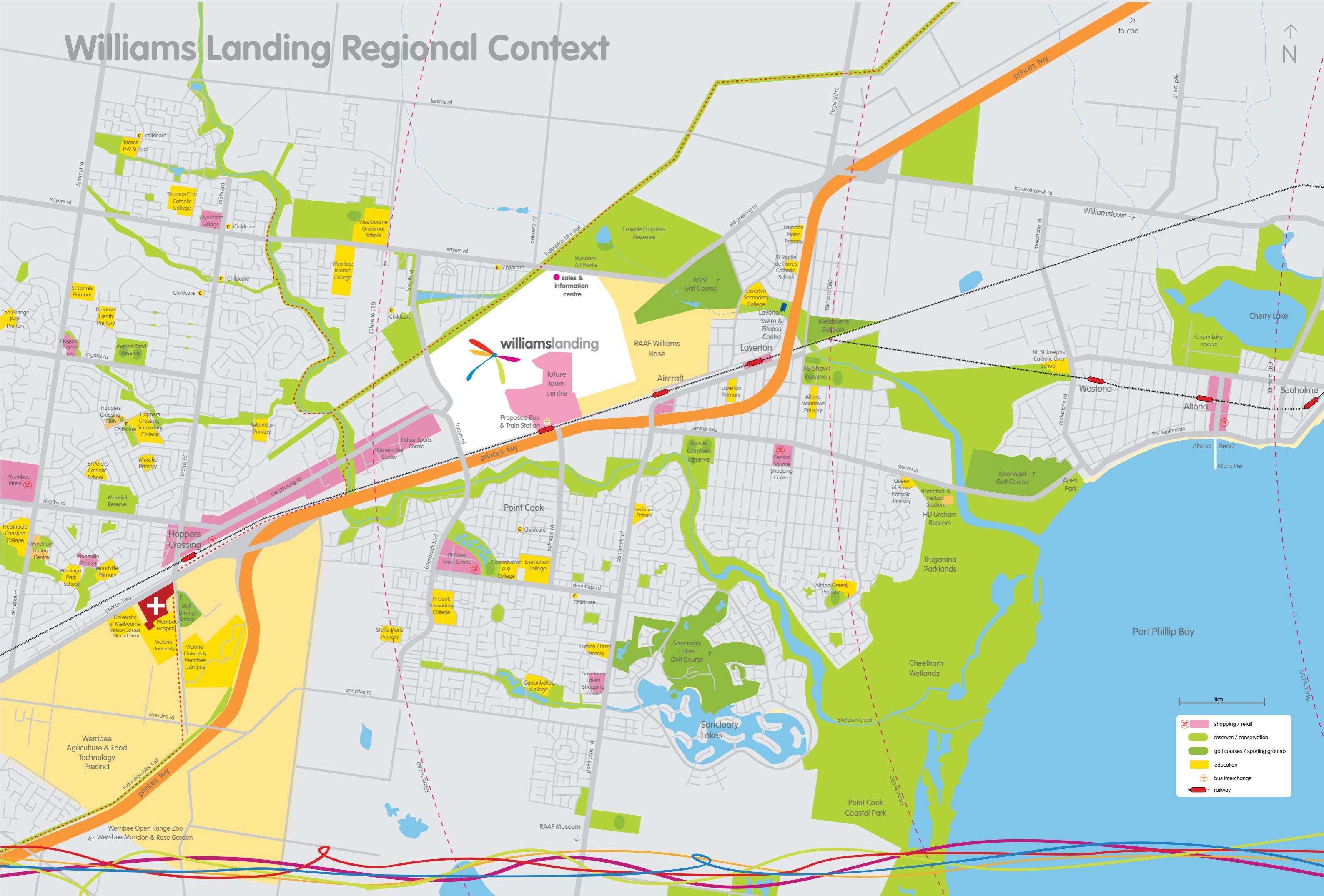


Suburb: Williams Landing
 Postcode: 3027
 Municipality: Wyndham
 0m 100m 200m



* This plan is indicative only of selected regional amenities and is subject to change at any time. Amenities can vary, cease or commence at any time without the knowledge of the developer. Elements of the plan are not drawn to scale. Printed 8 May 2010. No warranty is given as timing and correctness of this plan. Public transport services and freeway connection are proposed government projects. Conservation Reserves are intended for conservation and are not for public use.

Williams Landing Regional Context



1km

- shopping / retail
- reserves / conservation
- golf courses / sporting grounds
- education
- bus interchange
- railway